



CERTIFICATE OF ANALYSIS

20 Martin Ross Avenue, North York, ON, M3J 2K8, CANADA
Tel: (416) 665-9696, Fax: (416) 665-4439
Email: orders.trc@lgcgroup.com Website: www.trc-canada.com

1. Identification

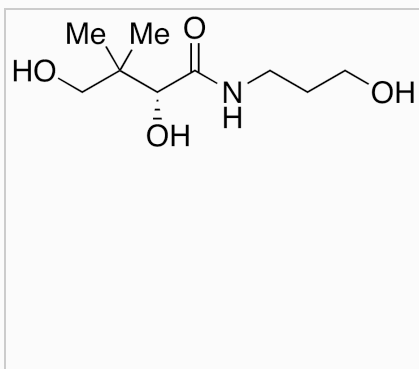
Catalogue Number: P180300

CAS Number: 81-13-0

Synonym: d-Panthenol 50; d-Pantothenol; d-Pantothenyl Alcohol; (R)-2,4-Dihydroxy-N-(3-hydroxypropyl)-3,3-dimethylbutanamide; (+)-Panthenol; Alcopan 250; Bepanthen; Bepanthen; Bepantol; Cornergel; Cozyme; D(+)-2,4-Dihydroxy-N-(3-hydroxypropyl)-3,3-dimethylbutyramide; D(+)-Panthenol; D(+)-Pantothenyl alcohol; D(+)-?,?-Dihydroxy-N-(3-hydroxypropyl)-?,?-dimethylbutyramide; D-P-A Injection; D-Panthenol; D-Pantothenyl alcohol; Dexpanthenol; Dolobene; Ilopan; Intrapan; Motilyn; NSC 302962; Panadon; Pantenyl; P

Product: D-Panthenol

Structure:



Molecular Formula:

C₉H₁₉NO₄

Molecular weight:

205.25

Source of Product:

N/A

Solubility:

DMSO (Slightly), Methanol (Slightly), Water (Slightly)

Lot Number: 2022-SAP-20

Purity: 98%

Shipping Condition: This Product Is Stable To Be Shipped At Room Temperature

Storage Condition: 20°C

2. Warning

Warning 1:

Warning 2:

Warning 3:

3. Analytical Information

Tests:	Specifications:	Results:
Appearance	Colourless to Pale Yellow Thick Oil to Gel	Clear Colourless Gel
NMR	Conforms to Structure	Conforms
Elemental Analysis	Conforms	%C: 52.36, %H: 9.76, %N: 6.58
HPLC Purity	Report Result	99.84% (ELSD)
MS	Conforms to Structure	Conforms
Specific Rotation	Report Result	+28.1° (c = 0.3, Water)

Additional Information: N/A

Purity is based on the analytical results of the tests performed. NMR and Elemental Analysis (if available) may have an accuracy of ± 2%. Isotopic purity is based on mass distribution observed. The contents of the specifications are subject to change without advance notice, and the specification values displayed here are the most up to date values.

4. Signatures

Reviewed By	Reviewed By	C of A Approved By	Test Date	Retest Date
Swathi Reddy	Toni Rantanen	Chanell Chu	8/8/2022	8/6/2026
				